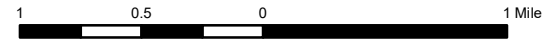




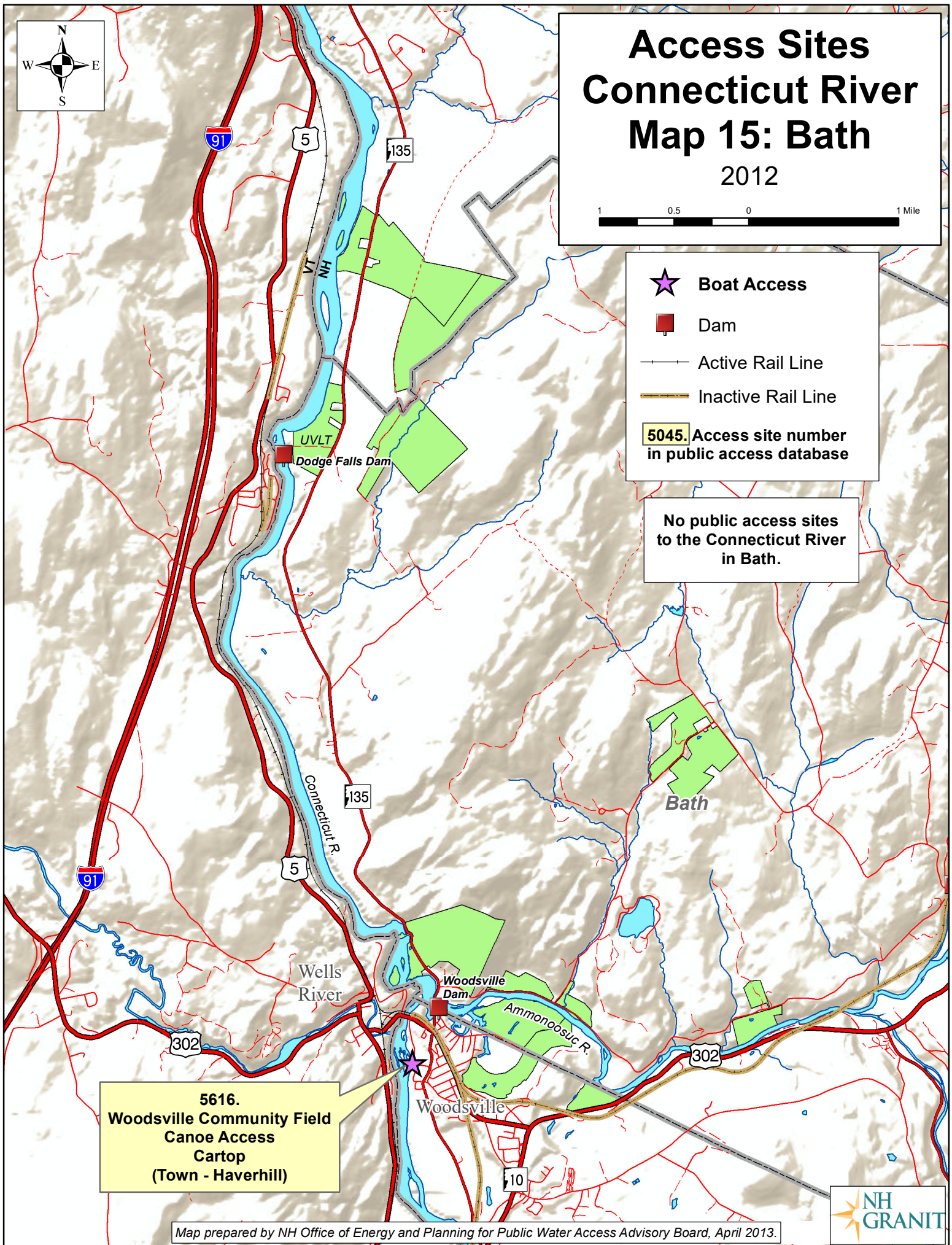
Access Sites Connecticut River Map 15: Bath

2012



- Boat Access**
- Dam**
- Active Rail Line**
- Inactive Rail Line**
- 5045.** Access site number in public access database

No public access sites to the Connecticut River in Bath.



5616.
Woodsville Community Field
Canoe Access
Cartop
(Town - Haverhill)